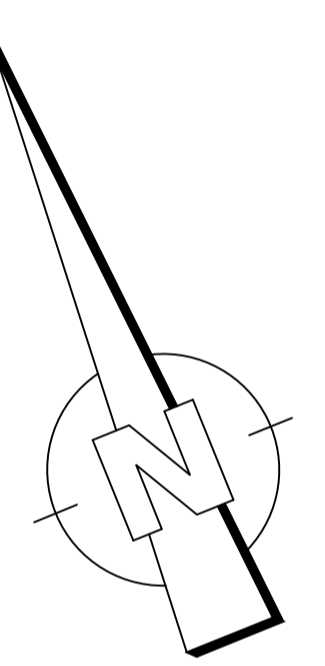
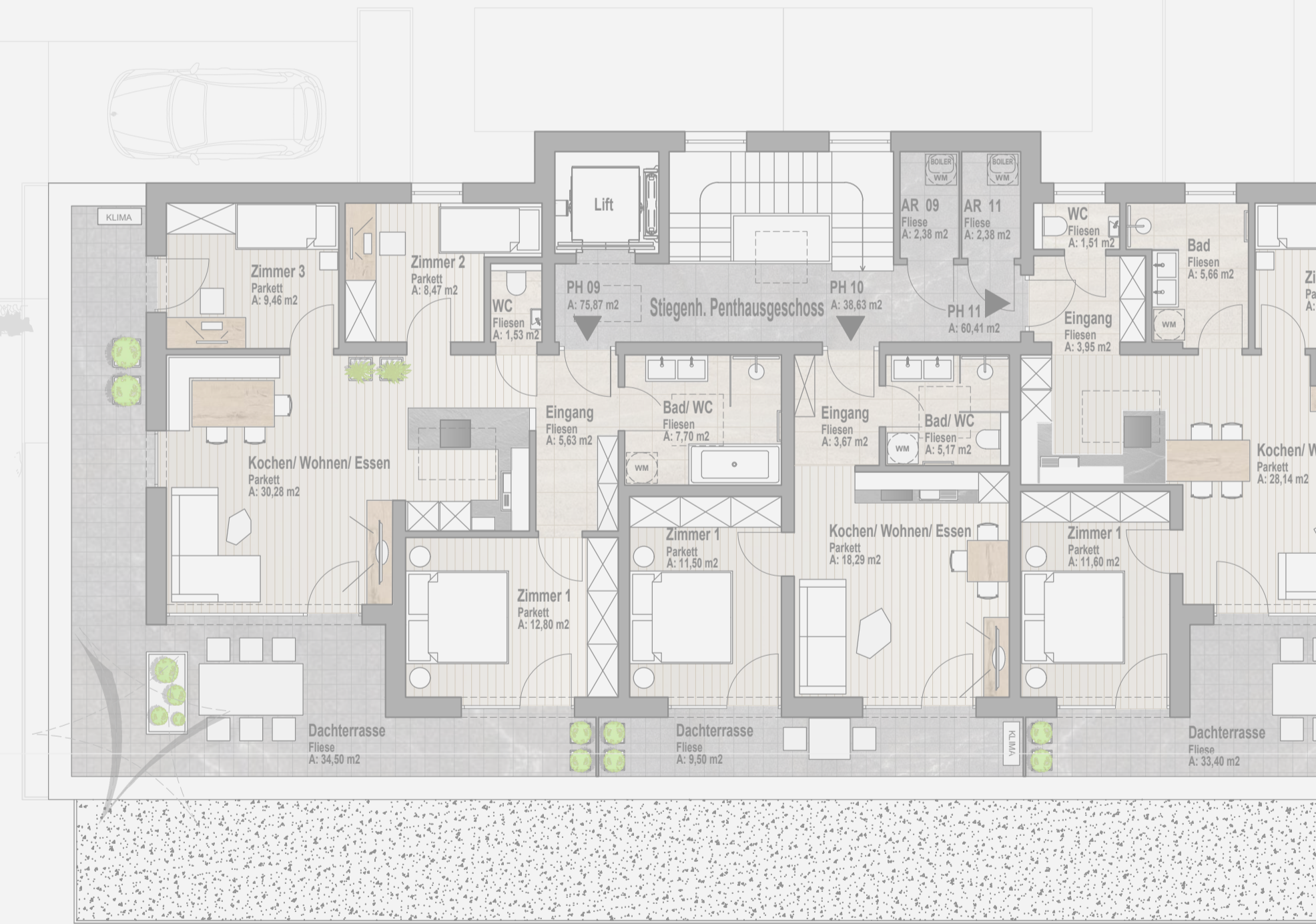
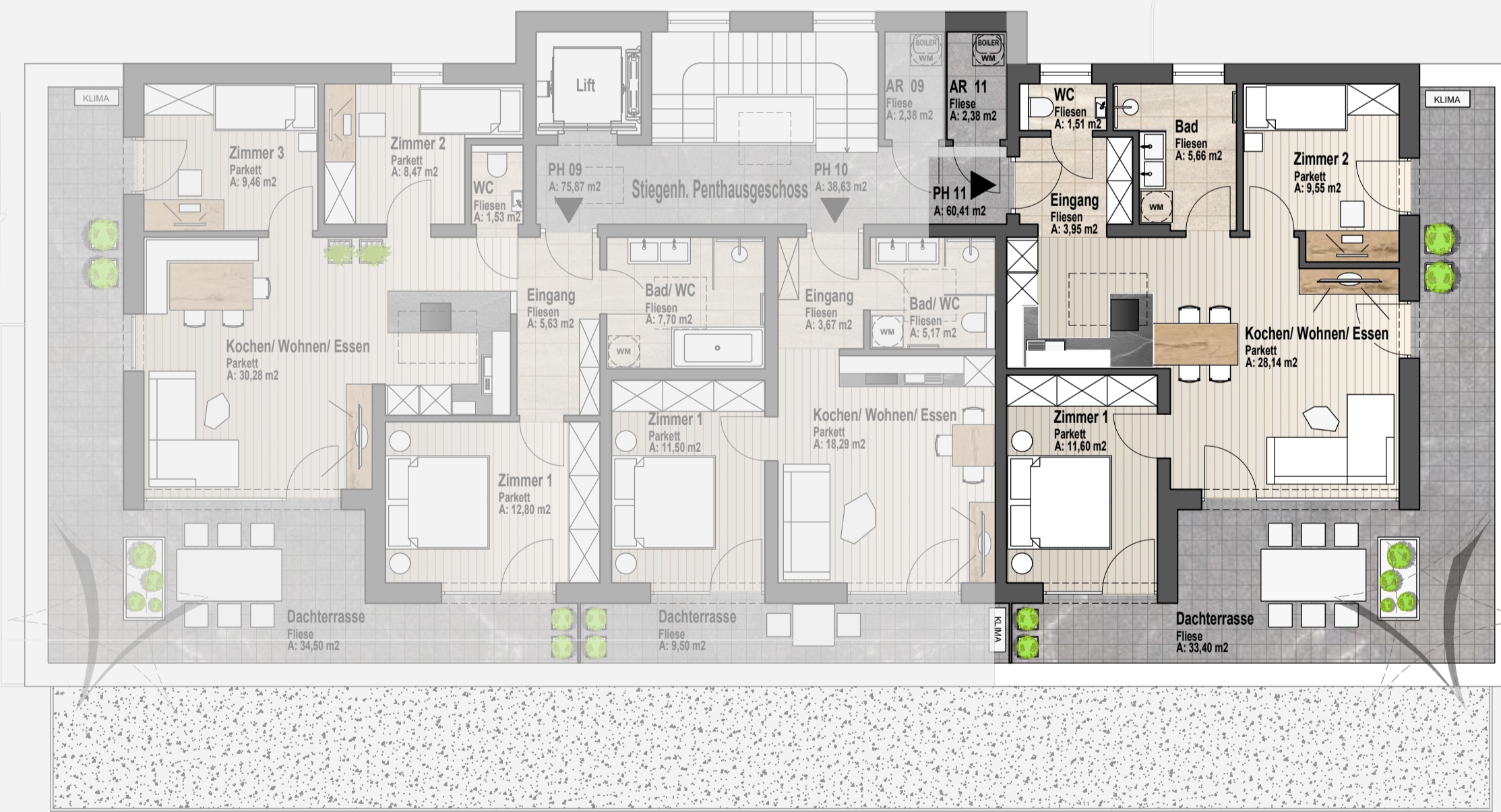
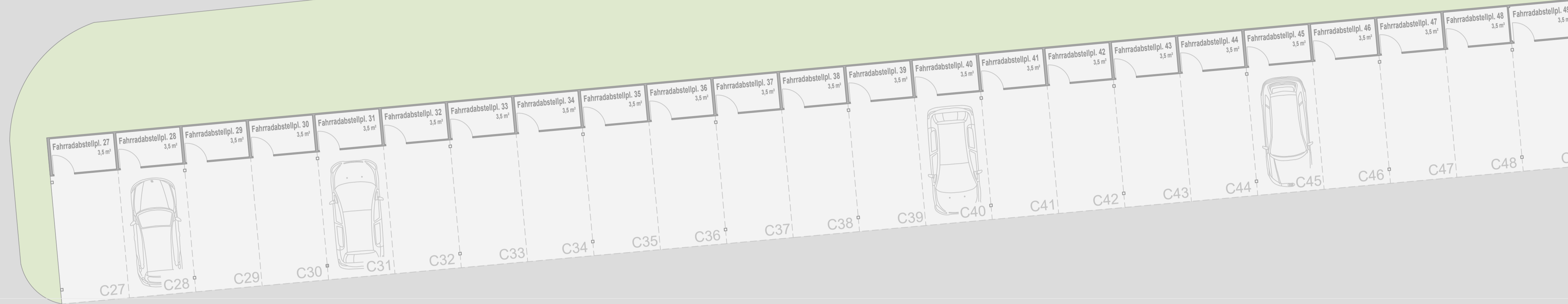


B65 GLEISDORFER STRASSE

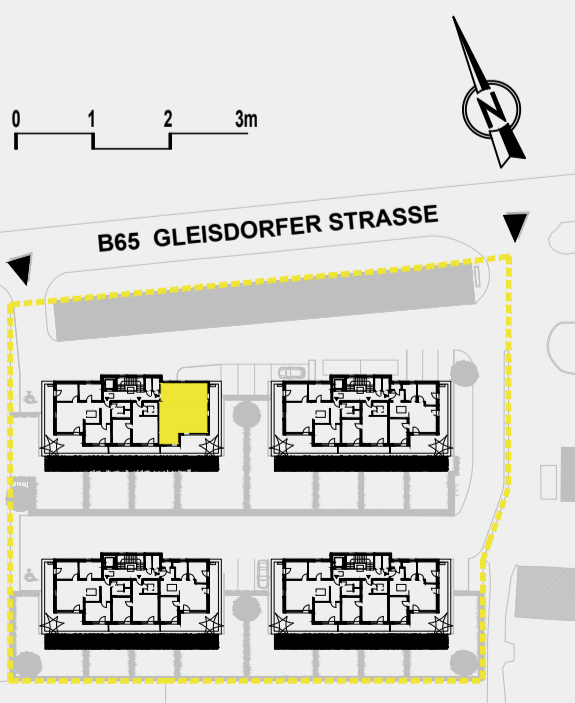


Haus 184

TOP 11

Penthausgeschoss

Wohnfläche	60,41 m ²
Abstellraum	2,38 m ²
Wohnnutzfläche	62,79 m²
Dachterrasse	33,40 m ²
Gesamt Nutzfläche	96,19 m²



PENTHAUSGESCHOSS