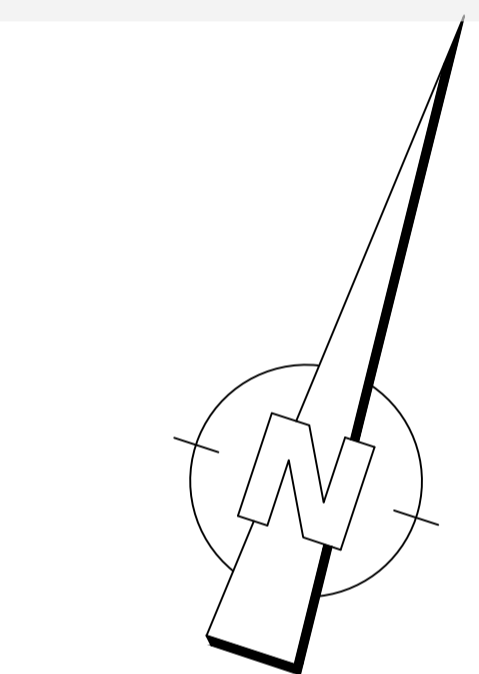
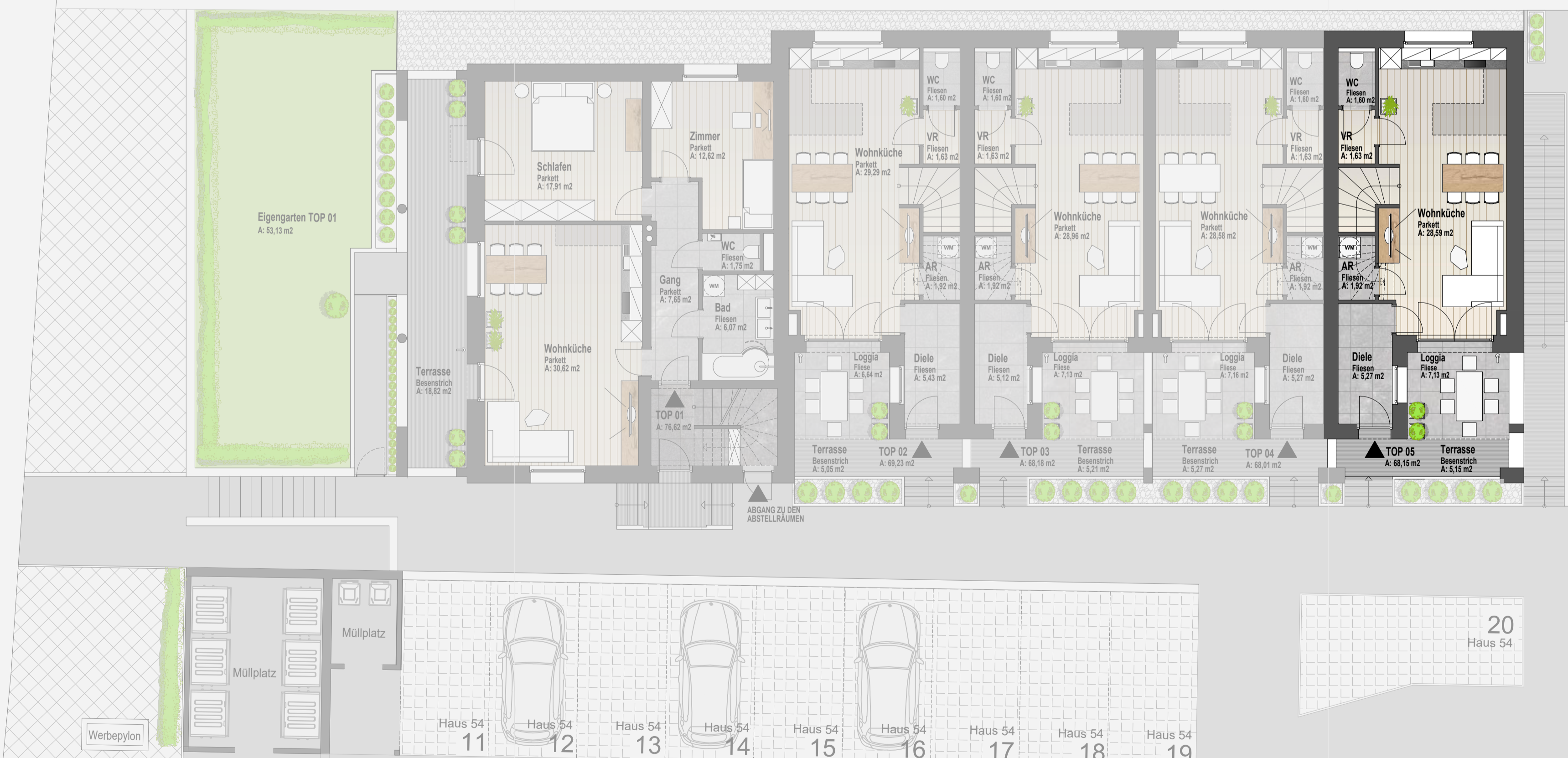
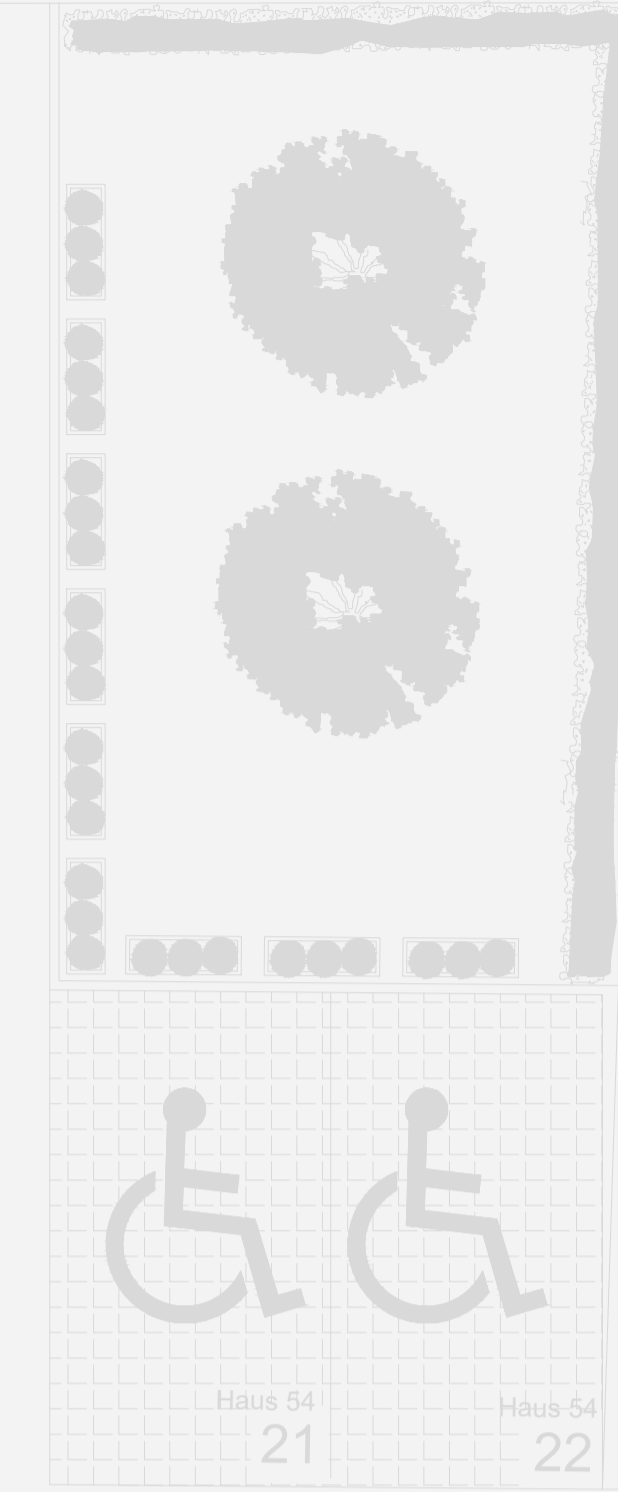


Stiftingtalstraße

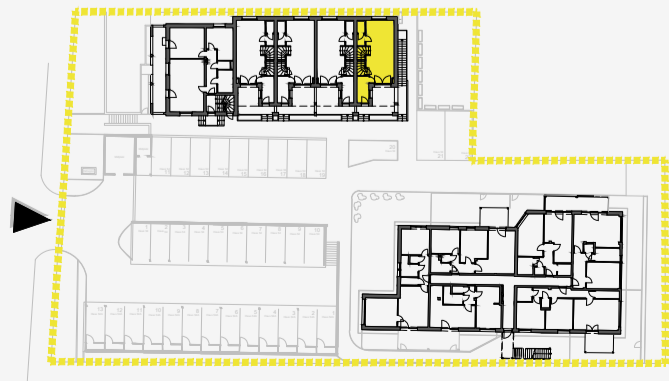
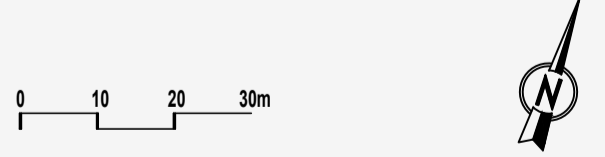


# Haus 54

## TOP 05

### Erdgeschoss & Obergeschoss

Wohnfläche	68,15 m <sup>2</sup>
Abstellraum	2,67 m <sup>2</sup>
<b>Wohnnutzfläche</b>	<b>70,82 m<sup>2</sup></b>
Terrasse	5,15 m <sup>2</sup>
Loggia	7,13 m <sup>2</sup>
Balkon	13,34 m <sup>2</sup>
<b>Gesamt Nutzfläche</b>	<b>96,44 m<sup>2</sup></b>



# ERDGESCHOSS & OBERGESCHOSS