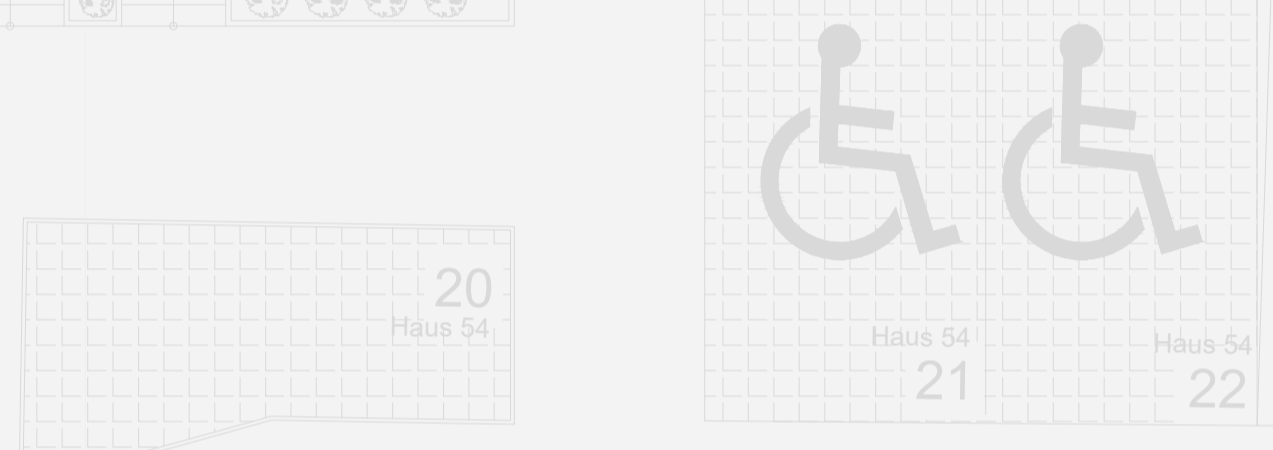
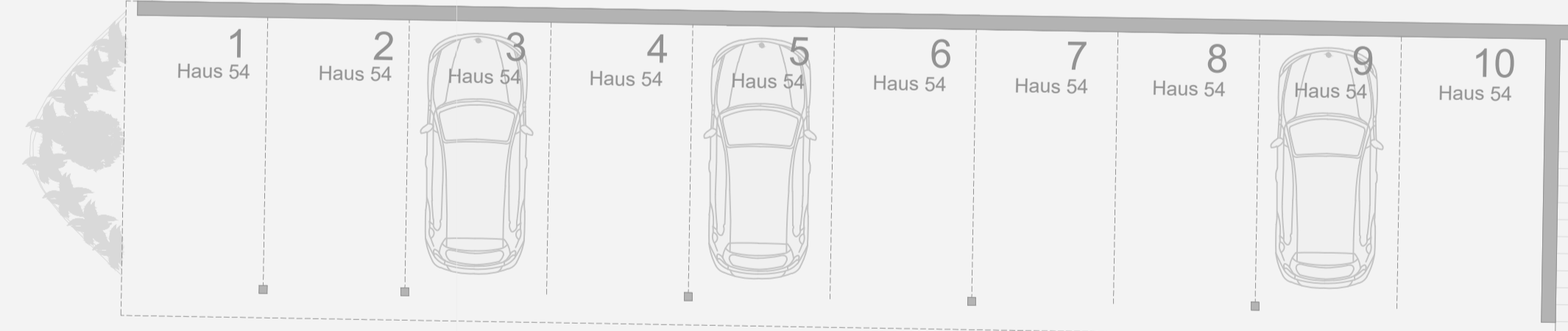
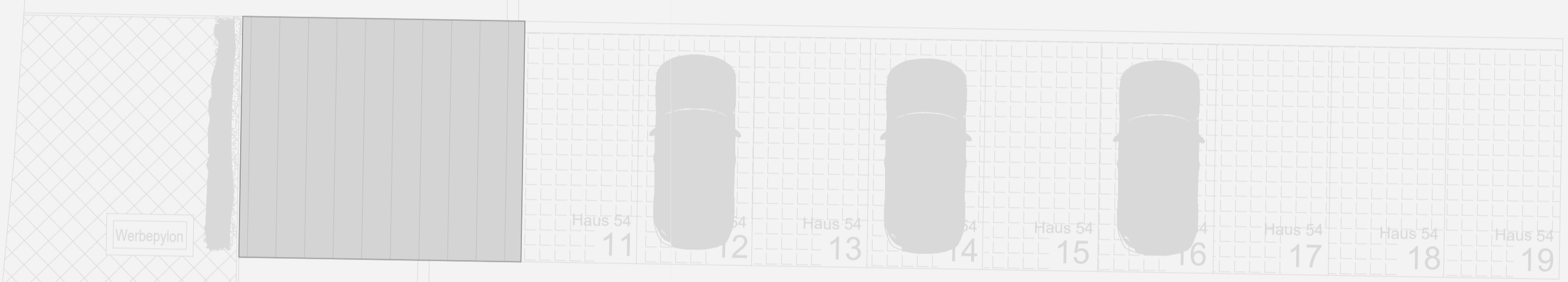


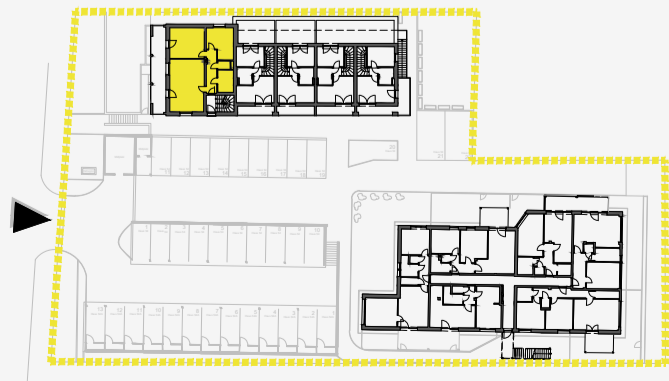
Stiftingtalstraße



# Haus 54

## TOP 06 Obergeschoss

Wohnfläche	76,39 m <sup>2</sup>
Abstellraum	3,62 m <sup>2</sup>
<b>Wohnnutzfläche</b>	<b>80,01 m<sup>2</sup></b>
Balkon	22,09 m <sup>2</sup>
<b>Gesamt Nutzfläche</b>	<b>102,10 m<sup>2</sup></b>



# OBERGESCHOSS